

Freestanding Patriotic Pinwheel



Collection No. PK10043
1 Design/3 Files

MATERIALS



Isacord Thread Colors

- 0015 White
- 1904 Cardinal
- 3600 Nordic Blue

Note: One spool of 1000 meter thread is adequate for the project unless otherwise noted.



MATERIALS

Stabilizers

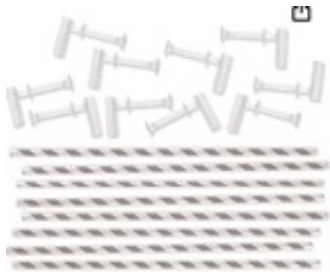
- OESD AquaMesh WashAway
- OESD BadgeMaster WashAway
- OESD StabilStick CutAway

Fabrics/Textiles

- Red quilter's cotton 9" x 6" (4)
- Blue quilter's cotton 9" x 6" (4)

Notion & Tools

- OESD Grippy GRID
- OESD Expert Embroidery Tape TearAway
- OESD Expert Embroidery Tape WashAway
- OESD Perfect Embroidery Press Cloth
- Embroidery Needle Sharp 75/11 (FSA)
- Pinwheel hardware can be found online or through a hobby shop



Isacord Thread Colors

- Per the thread chart
- Match bobbin thread to top thread



SUMMARY



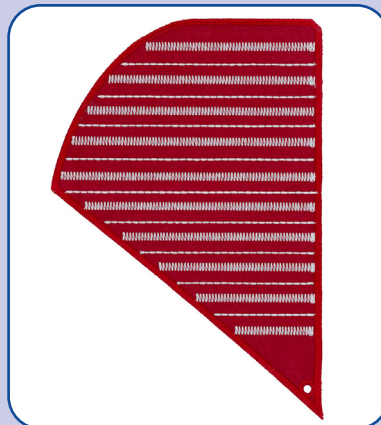
Approximately 8.5" square and 2" deep

PK10043-01



Requires 2 Designs

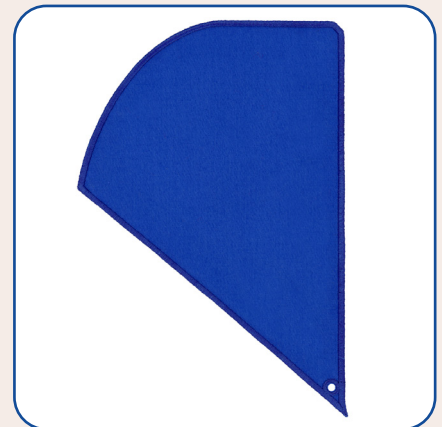
PK10043-02



Requires 2 Designs

BONUS BLANK DESIGN

PK10043-03



Requires 4 Designs

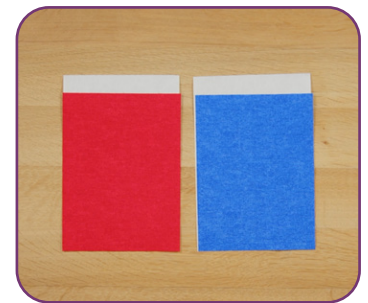


General Instructions

The freestanding applique instructions, included in the collection, are general instructions. For demonstration purposes, a sample design that best demonstrates the technique is shown. Fabric and thread requirements will vary by design, but the general technique is the same. All designs are stitched with matching thread, top and bobbin. Note: Some thread colors in instructions have been changed or digitally enhanced for better visibility.

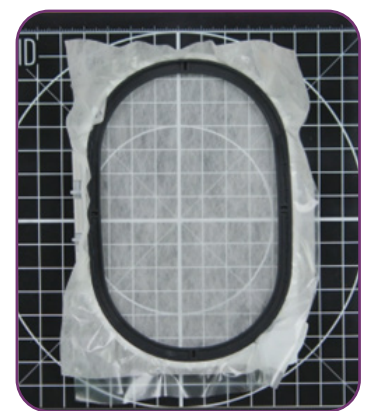
□ Step 1 - Double Sided Freestanding Applique

- Adhere one layer of StabilStick CutAway to the wrong side of all applique fabrics to provide stiffness to the finished structure.
- Cut the prepared applique fabrics 1/4"-1/2" larger than the templates that are included at the end of the instructions.



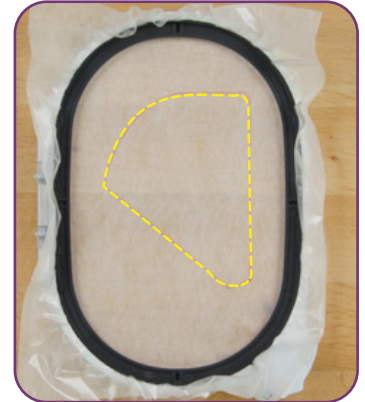
□ Step 2

- Hoop one layer of AquaMesh and one layer of BadgeMaster for all designs.



Step 3

- Load selected design into the machine.
- Example design is 51337-02.
- Thread the machine per the thread chart.
- Match bobbin thread to top thread.
- Place the hoop on the machine.
- Stitch Machine Step 1, Front and Back Fabric Placement Stitch.



Step 4

- Remove the hoop from the machine, but NOT the project from the hoop.
- Place the hoop on a flat surface.
- Completely cover the placement stitch with the prepared applique fabric.
- Tape in place to secure.



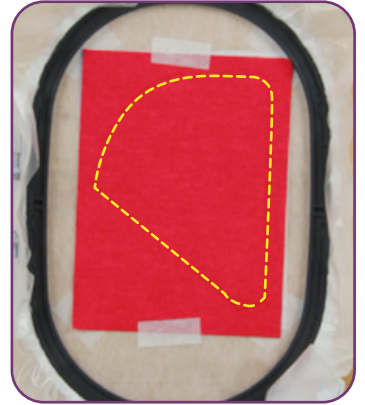
Step 5

- Turn the hoop over and place the prepared applique fabric, right side up, completely covering the placement stitch.
- Carefully tape to secure.
- Tip: Avoid pushing too hard on the stabilizer to prevent it from dislodging from the hoop.



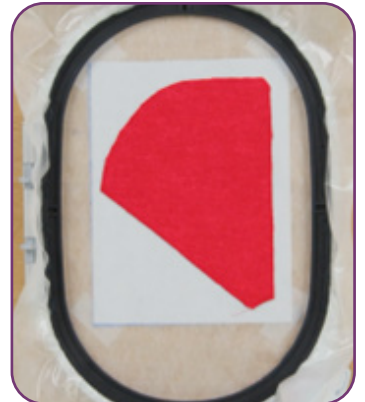
□ Step 6

- Return the hoop to the machine.
- Stitch Machine Step 2, Cut Line and Tackdown.



□ Step 7

- Remove the hoop from the machine, but NOT the project from the hoop.
- Trim the excess fabric as close to the cut line as possible. If the outermost stitches (cut line) are cut, the inner stitches (tackdown) will hold the applique in place. Tip: If the stabilizer is cut or a hole is created while trimming the fabric, use OESD Expert Embroidery Tape WashAway as a patch.



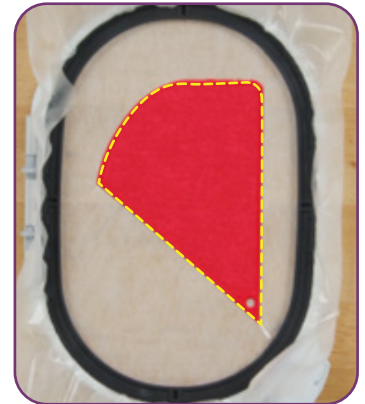
□ Step 8

- Turn the hoop over and trim the excess fabric as close to the cut line as possible.



□ Step 9

- Return the hoop to the machine.
- Stitch Machine Step 3, Cover Stitch.



□ Step 10

- Stitch Machine Step 4, Stripes.



□ Step 11

- When the design is complete, remove the project from the hoop and trim the stabilizer 1/4"-1/2" outside the design.



ASSEMBLY

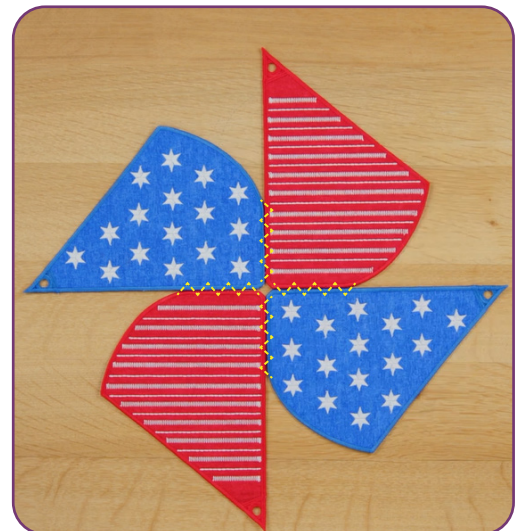
□ Step 12

- Rinse each piece in warm running water until the design is only slightly tacky.
- Place right side down on a non-stick surface to dry. Parchment paper or a cooling rack work well to prevent curling. Dry completely.
- Once dry, press right side down on a Perfect Embroidery Press Cloth.



□ Step 13

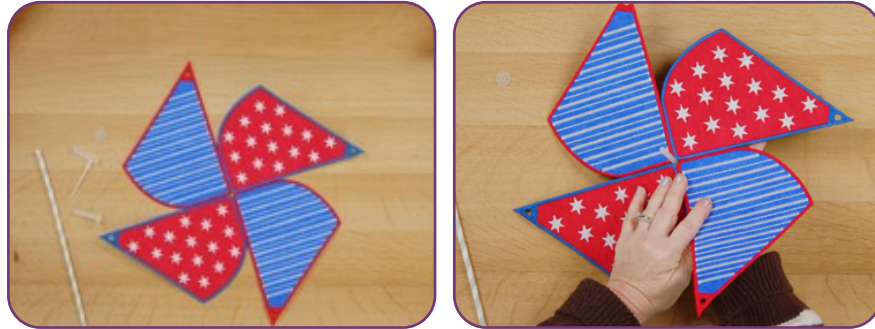
- Line up pinwheel pieces PK10043-01 and PK10043-02 as shown to connect.
- Thread the sewing machine with matching thread in the top and bobbin.
- Stitch two pieces together for 2", using a multi-step zigzag stitch.
- Back stitch at the beginning and end to secure.
- Trim thread tails.
- Repeat for second set.
- Line up the two sets as shown and stitch together 2" on either side of the center.
- There will be an eyelet in the center.



ASSEMBLY

□ Step 14

- Thread the pinwheel hardware through the center eyelet.



□ Step 15

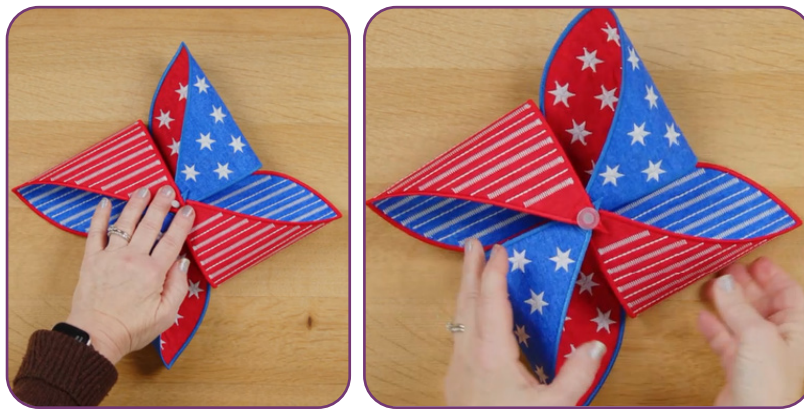
- Fold one star section over and thread the hardware through the end eyelet.



ASSEMBLY

□ Step 16

- Going clockwise, fold the next striped section over and thread the hardware through the end eyelet.
- Repeat this process for the final two blades.
- Attach the cap, following the manufacturer's instructions.



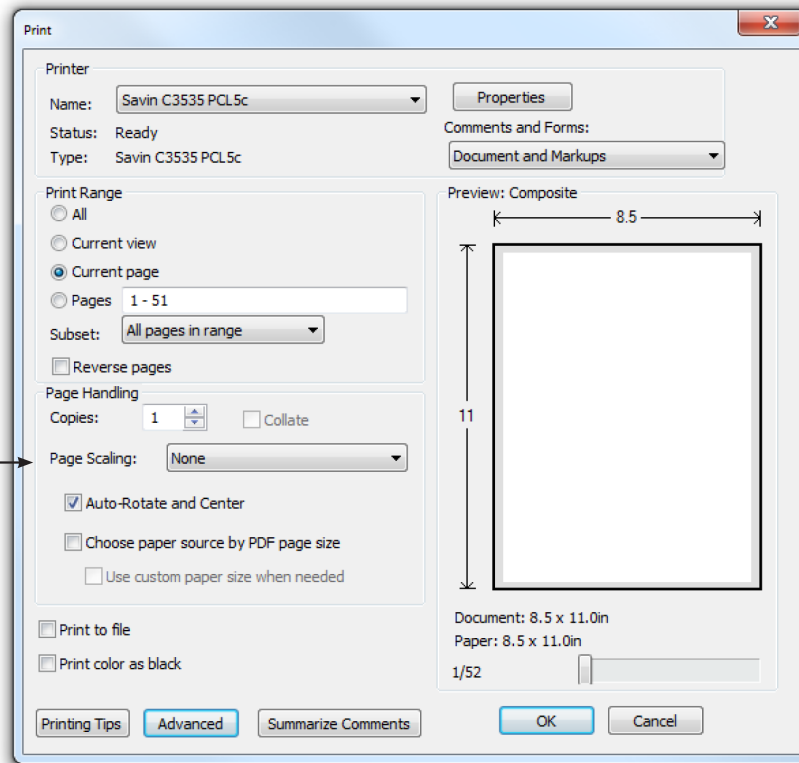
□ Step 17

- Attach the straw to the hardware, following the manufacturer's instructions.
- The project is complete. Enjoy!



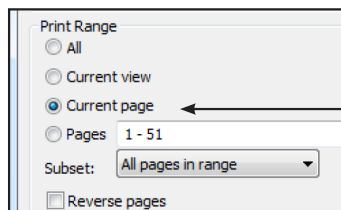
ATTENTION

When printing this document, any page scaling or page fitting options in your print dialog box must be turned OFF or set to NONE so that your files will print out at their actual size. Images not printed at actual size will not function as intended.



TO SAVE PAPER

Only print the desired image by navigating to the image's page, go to File > Print and select "Current page" in the print dialog box. Repeat for each desired image.



APPLIQUE PATTERNS



PK10043-01
Front Fabric

PK10043-01
Back Fabric

Print at 100%. No scaling. This box measures 1" x 1". Use the box as an accuracy guide when printing templates.

APPLIQUE PATTERNS



PK10043-02
Front Fabric

PK10043-02
Back Fabric

Print at 100%. No scaling. This box measures 1" x 1". Use the box as an accuracy guide when printing templates.

APPLIQUE PATTERNS



PK10043-03
Front Fabric

PK10043-03
Back Fabric

Print at 100%. No scaling. This box measures 1" x 1". Use the box as an accuracy guide when printing templates.

Print at 100%. No scaling. This box measures 1" x 1". Use the box as an accuracy guide when printing templates.

PK10043-01
Front Fabric
Mirrored

PK10043-01
Back Fabric
Mirrored

MIRRORED PATTERNS



Print at 100%. No scaling. This box measures 1" x 1". Use the box as an accuracy guide when printing templates.

PK10043-02
Front Fabric
Mirrored

PK10043-02
Back Fabric
Mirrored

MIRRORED PATTERNS



Print at 100%. No scaling. This box measures 1" x 1". Use the box as an accuracy guide when printing templates.

PK10043-03
Front Fabric
Mirrored

PK10043-03
Front Fabric
Mirrored